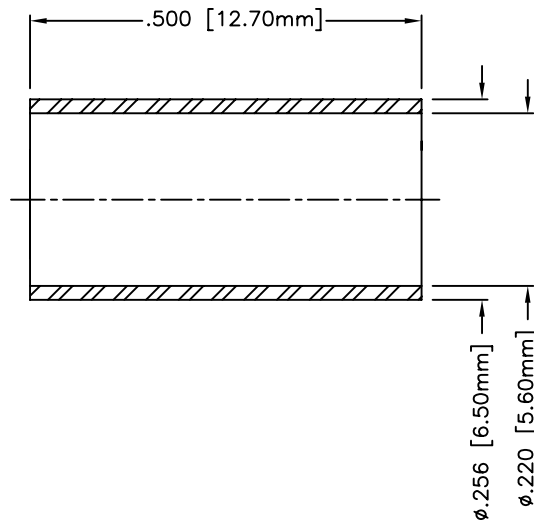
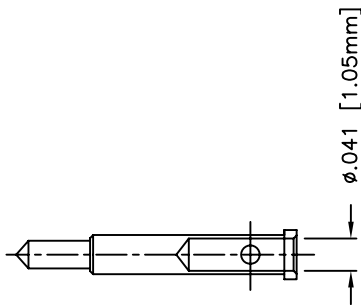
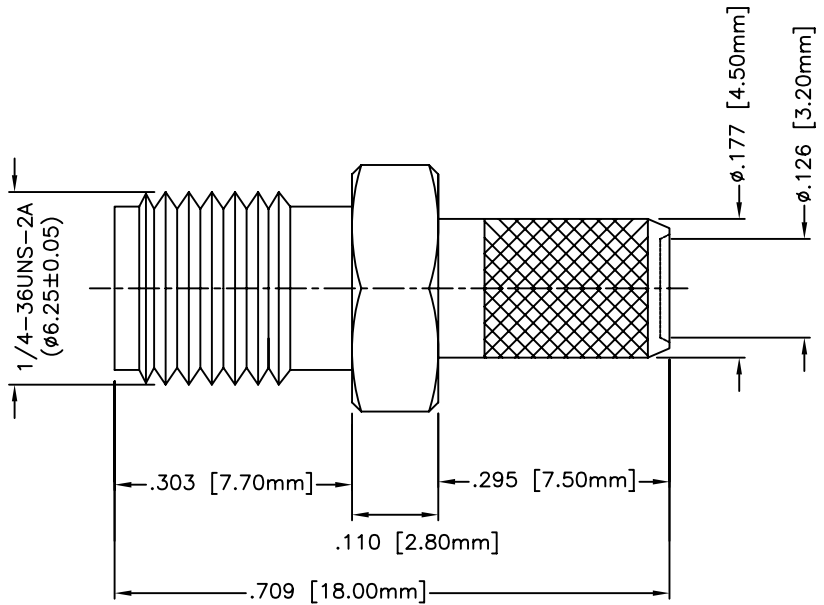
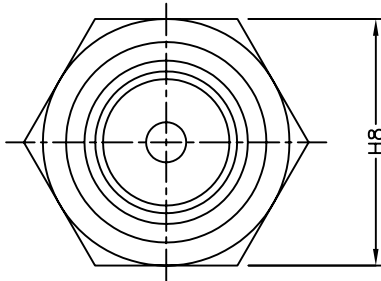


DESCRIPTION	MATERIAL	FINISH
BODY	BRASS	NICKEL
CENTER CONTACT	BRASS	GOLD
OUTER CONTACT	BRASS	NICKEL
CRIMP FERRULE	BRASS	NICKEL
INSULATOR	PTFE	—

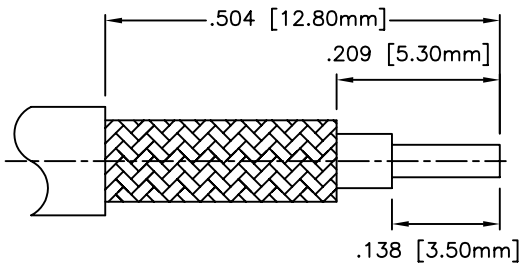


CRIMP SIZES REQUIRED

FERRULE: .213 [5.40mm]

PIN: .068 [1.73mm]

HEX CRIMP TOOL



STRIPPING DIMENSIONS

NOTE:

1. UNLESS OTHERWISE SPECIFIED, ALL DIMENSIONS ARE NOMINAL
2. ALL SPECIFICATIONS ARE SUBJECT TO CHANGE WITHOUT NOTICE AT ANY TIME.

				SIZE	TITLE:				
				A	DETAIL: RP-SMA MALE CRIMP FOR RG58/195 SERIES				
REV	ECN No.	DATE	DESCRIPTION	DRAWN BY	B.Puchaski 04/14/2009	DRAWING No.	ARSJ-1700	REV	A
				ORIGINATOR	B.Puchaski 04/14/2009				
				APPROVAL	M.Audas 04/14/2009	PART No.	ARSJ-1700		
				SCALE	2:1	SHEET	1/1	MATERIAL	Noted
						FILE No.	ARSJ-1700		



Website: www.L-com.com  
Tel: 1-800-343-1455  
Copyright © 2009 L-com, Inc.  
All rights reserved.